

# Going on a Trip

## Activity Manual

### <How to Play 1 – Making a Trip Bag>

1. Prepare a bag, string, and velcro.
2. Decorate the bag using different painting and decoration materials.
3. Attach string to the bag, then stick on velcro to finish.

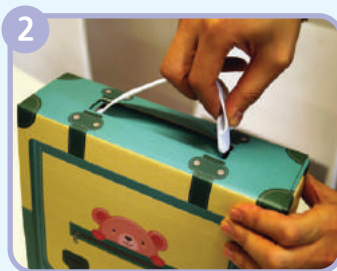
### <How to Play 2 – Travel Play>

1. Think about the life tools that are necessary when you go on a trip.
2. Use the bag and travel bag that you created along with travel tools to play.

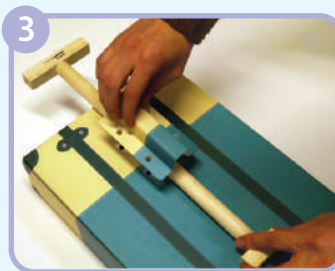
### <How to Assemble the Travel Bag>



1  
Unfold the travel bag, insert the bottom part, and assemble.



2  
Fold the big and small wings of the bag's upper part, put the lid on, then insert the handle to fit the hole.



3  
Put the wooden handle on the back part of the bag, then secure the board with the plastic screw.



4  
Travel bag is ready.

### \* Tips

- You can create more travel tools that you need and use them in the activity while playing.

★ Refer to the 'Instructions' in the Nuri Nori Teacher Manual to know in detail, how to do the activity.

★ Please hand over these learning materials in the activity area after giving a full explanation of the rules and demonstration on how to use the materials.

### <Precautions>

- To prevent possible injuries, do not throw the product at people or animals.
- Watch out for paper cuts.

# Going on a Trip

## <Components of the Learning Material>

### 1. Travel bags



### 2. Travel Tools



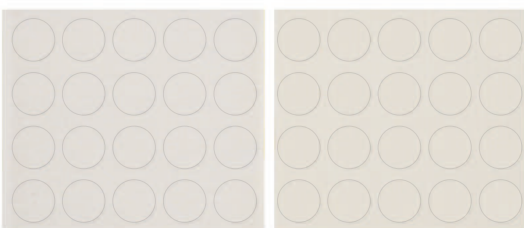
### 3. Bags



### 4. Strings



### 5. Velcro



### 6. Activity Manual

**3-13**  
Art / Role Play

**Going on a Trip**  
Activity Manual

<How to Play 1 - Making a Trip Bag>  
1. Prepare a bag, string, and velcro.  
2. Decorate the bag using different painting and decoration materials.  
3. Attach string to the bag, then stick on velcro to finish.

<How to Play 2 - Travel Play>  
1. Think about the life tools that are necessary when you go on a trip.  
2. Use the bag and travel bag that you created along with travel tools to play.

<How to Assemble the Travel Bag>

\* Tips  
- You can create more travel tools that you need and use them in the activity while playing.

\* Refer to the 'Instructions' in the Nuri Nori Teacher Manual to know in detail, how to do the activity.  
\* Please hand over these learning materials in the activity area after giving a full explanation of the rules and demonstration on how to use the materials.

<Precautions>  
- To prevent possible injuries, do not throw the product at people or animals.  
- Wash out for paper cuts.

**nuri nori**  
NORI NORI NORI NORI NORI