

LT 3-3-1

Manipulative

Brush Your Teeth

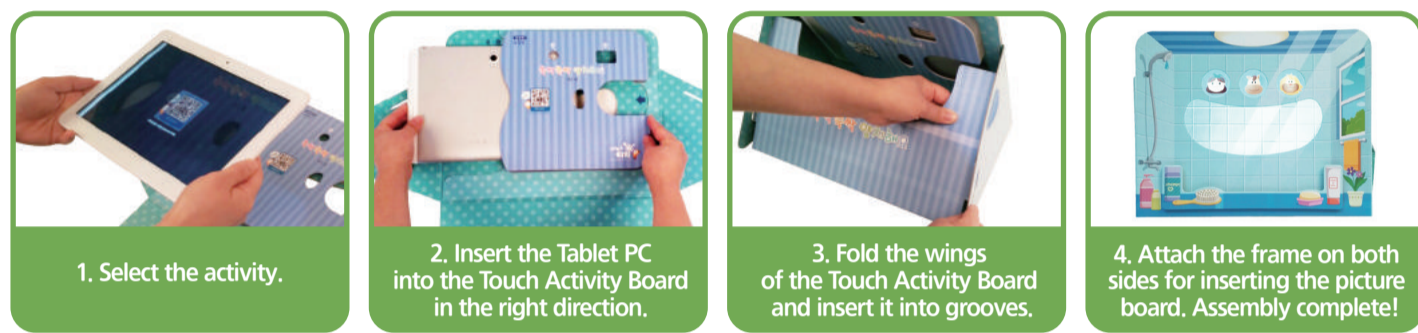
Activity Manual

[Brush Your Teeth] is a learning material that lets children listen to the story, talk about why they have to brush their teeth thoroughly, experience brushing teeth, and develop good habits to keep their bodies clean and healthy by themselves.

<Activity Overview>

1. Talk about experiences brushing your teeth.
2. While listening to the story, think about why you have to brush your teeth.
3. Play the brushing-your-teeth activity.
4. Finish the activity and evaluate it.

<How to Assemble the Touch Activity Board>



<Precautions>

- Please inform children not to press the Tablet PC too hard or hit it.
- To prevent possible injuries, do not throw the product at people or animals.
- Please make sure children do not put any pieces or parts in their mouth.



활동지 1_앞면

LT 3-3-1

Manipulative

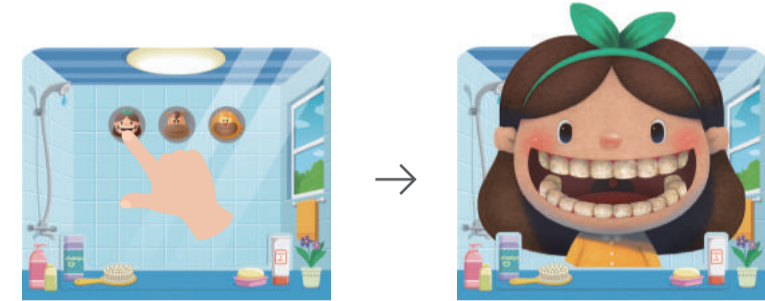
Brush Your Teeth

Activity Manual

<How to Play>

- Before starting the activity, refer to <How to Assemble the Touch Activity Board> and combine the tablet PC and Touch Activity Board.

1. Choose and touch either the human, horse or lion for toothbrushing and insert a face frame into the Touch Activity Board.



2. Squeeze the toothpaste onto the toothbrush and brush the teeth.



3. After brushing the teeth, check that the teeth are clean. Then, put the puzzle of the picture together, touch the mouth and then take out the frame.



활동지 2_앞면

Brush Your Teeth

<Components of the Learning Material>

1. Touch Activity Board



2. Story



3. Picture Boards



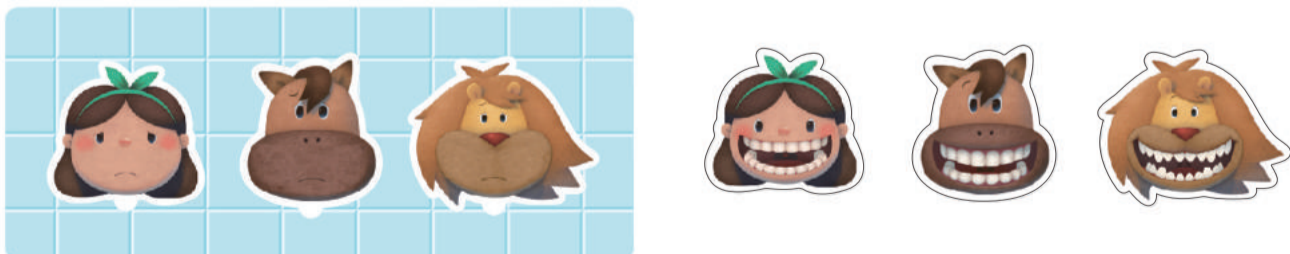
4. Toothbrushes



5. Toothpaste



6. Face Puzzle (Puzzle pieces included)



7. Brush-your-teeth Guide Material



8. Activity Manual



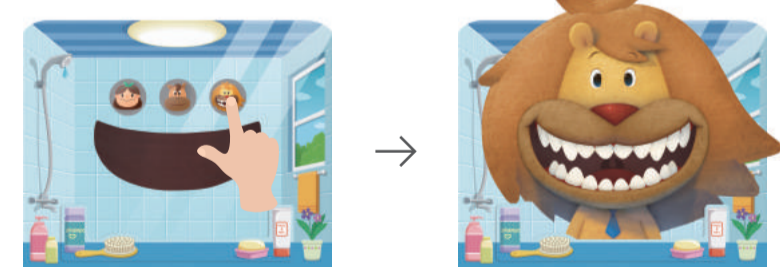
LT 3-3-1

Manipulative

- If you want to brush the same character's teeth one more time, do not take out the face frame but touch the mouth again.



- If you want to brush another character's teeth, select and touch one of the characters, insert the face frame, and repeat the activity.



4. The activity is finished when all the puzzle pieces have been put together and the human, horse, and lion's smiley faces are completed.

* Tips

- Guide the children on how to brush their teeth properly and make it a habit by using the storybook and the guide.
- Use the multimedia content [Brush Your Teeth] to extend to other activities.

<Precautions>

- ★ Refer to the 'Instructions' in the Nuri Nori Teacher Manual to know in detail, how to do the activity.
- ★ Please hand over these learning materials in the activity area after giving a full explanation of the rules and demonstration on how to use the materials.



활동지 2_뒷면

활동지 1_뒷면